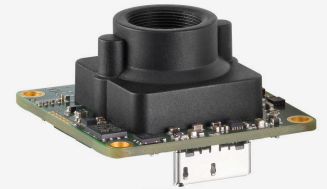
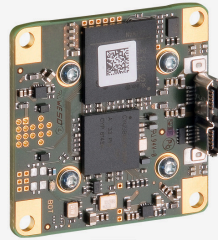
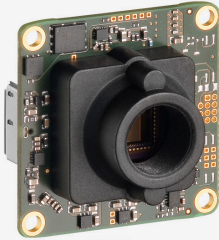




UI-3481LE-M-GL (AB00487)

Discontinued
The model has been discontinued.

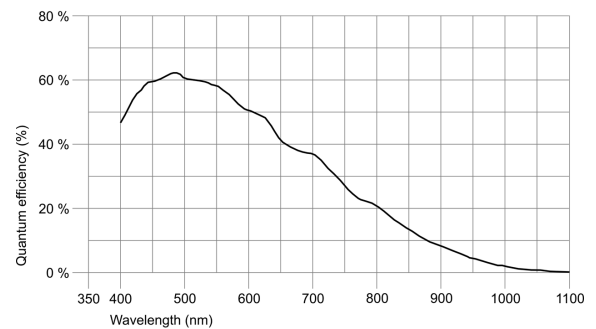


uEye industrial cameras now also work with IDS peak! We recommend the Software Development Kit for the implementation of new projects. [Learn about the process here](#) and [switch now](#). Please note: The technical data given here was measured using the IDS Software Suite.

Specification

Sensor

| | |
|---|--|
| Sensor type | CMOS Mono |
| Shutter | Rolling shutter / Global Start Shutter |
| Sensor characteristic | Linear |
| Readout mode | Progressive scan |
| Pixel Class | 5 MP |
| Resolution | 4.92 Mpix |
| Resolution (h x v) | 2560 x 1920 Pixel |
| Aspect ratio | 4:3 |
| ADC | 12 bit |
| Color depth (camera) | 12 bit |
| Optical sensor class | 1/2.5" |
| Optical Size | 5.632 mm x 4.224 mm |
| Optical sensor diagonal | 7.04 mm (1/2.27") |
| Pixel size | 2.2 μm |
| Manufacturer | Onsemi |
| Sensor Model | MT9P031STM |
| Gain (master/RGB) | 30x/- |
| AOI horizontal | increased frame rate |
| AOI vertical | increased frame rate |
| AOI image width / step width | 32 / 4 |
| AOI image height / step width | 4 / 2 |
| AOI position grid (horizontal/vertical) | 4 / 2 |
| Binning horizontal | increased frame rate |
| Binning vertical | increased frame rate |
| Binning method | Color |
| Binning factor | 2 / 3 / 4 / 6 |
| Subsampling horizontal | increased frame rate |
| Subsampling vertical | increased frame rate |
| Subsampling method | Color |
| Subsampling factor | 2, 3, 4, 5, 6 |



Subject to technical modifications (2025-02-14)



Model

| | |
|-----------------------------------|-------------------|
| Pixel clock range | 25 MHz - 104 MHz |
| Frame rate freerun mode | 15 |
| Frame rate trigger (maximum) | 15 |
| Exposure time (minimum - maximum) | 0.031 ms - 549 ms |
| Power consumption | 1.4 W - 1.7 W |

Ambient conditions

The temperature values given below refer to the outer device temperature of the camera housing. For PCB versions, refer to the separate hints in the respective documentation.

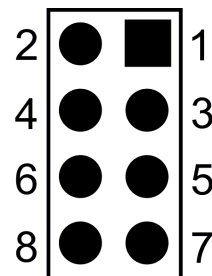
| | |
|-------------------------------------|---------------------------------|
| Device temperature during operation | 0 °C - 55 °C / 32 °F - 131 °F |
| Device temperature during storage | -20 °C - 60 °C / -4 °F - 140 °F |
| Humidity (relative, non-condensing) | 20 % - 80 % |

Connectors

| | |
|---------------------|--|
| Interface connector | USB 3.0 micro-B |
| I/O connector | 8-pin plated-through holes (for connector 50 mil/RM 1,27 mm) |
| Power supply | USB cable |

Pin assignment I/O connector

| | |
|---|---------------------------------------|
| 1 | USB Power supply (VCC) 5 V |
| 2 | USB Ground (GND) |
| 3 | Trigger input without optocoupler (+) |
| 4 | Flash output without optocoupler (+) |
| 5 | General Purpose I/O (GPIO) 1 |
| 6 | General Purpose I/O (GPIO) 2 |
| 7 | I2C bus clock signal |
| 8 | I2C bus data signal |



Camera rear view

Design

| | |
|------------------|-----------------------------|
| Lens Mount | S-Mount |
| IP code | - |
| Dimensions H/W/L | 36.0 mm x 36.0 mm x 20.2 mm |
| Mass | 12 g |