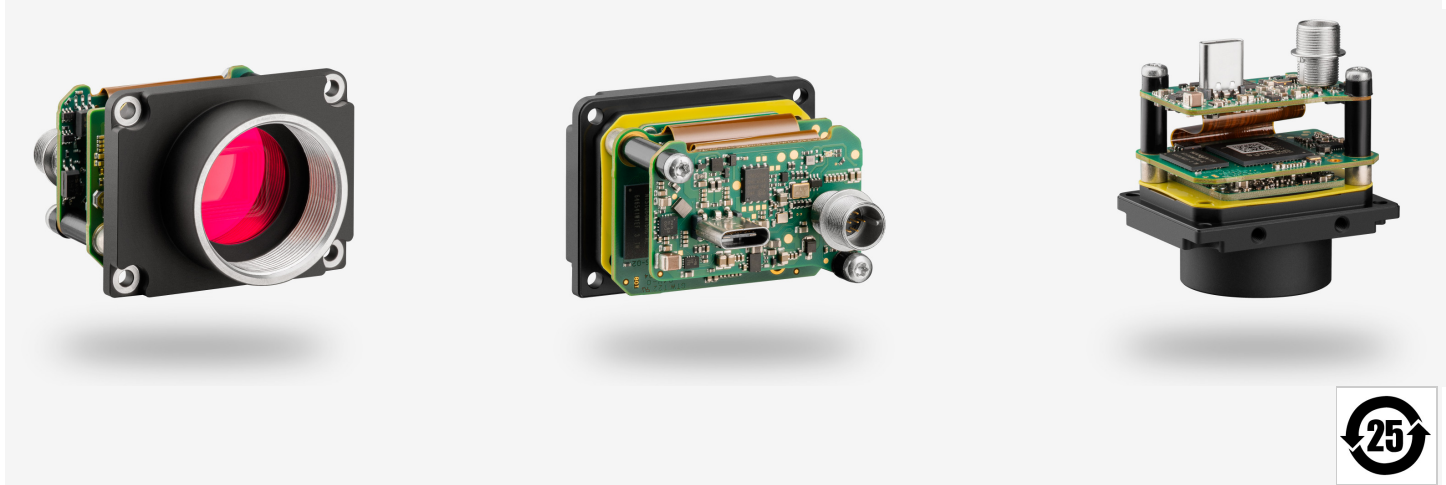


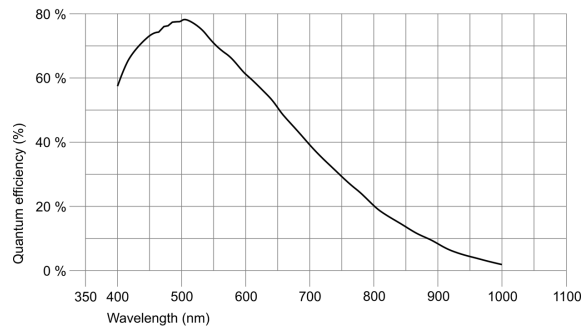
Not recommended for new designs
The camera model is no longer recommended for new application development.



ids peak uEye industrial cameras now also work with IDS peak! We recommend the Software Development Kit for the implementation of new projects. [Learn about the process here and switch now.](#) Please note: The technical data given here was measured using the IDS Software Suite.

Specification

| | |
|---|----------------------|
| Sensor | |
| Sensor type | CMOS Mono |
| Shutter | Global Shutter |
| Sensor characteristic | Linear |
| Readout mode | Progressive scan |
| Pixel Class | 2 MP |
| Resolution | 2.35 Mpix |
| Resolution (h x v) | 1936 x 1216 Pixel |
| Aspect ratio | 16:10 |
| ADC | 12 bit |
| Color depth (camera) | 12 bit |
| Optical sensor class | 1/1.2" |
| Optical Size | 11.345 mm x 7.126 mm |
| Optical sensor diagonal | 13.4 mm (1/1.19") |
| Pixel size | 5.86 µm |
| Manufacturer | Sony |
| Sensor Model | IMX174LLJ-C |
| Gain (master/RGB) | 24x/4x |
| AOI horizontal | same frame rate |
| AOI vertical | increased frame rate |
| AOI image width / step width | 96 / 8 |
| AOI image height / step width | 2 / 2 |
| AOI position grid (horizontal/vertical) | 8 / 2 |
| Binning horizontal | same frame rate |
| Binning vertical | same frame rate |
| Binning method | M/C automatic |
| Binning factor | 2 |
| Subsampling horizontal | same frame rate |
| Subsampling vertical | same frame rate |
| Subsampling method | M/C automatic |
| Subsampling factor | 2, 4, 6, 8, 16 |



Subject to technical modifications (2024-04-26)

Model

| | |
|-----------------------------------|--|
| Pixel clock range | 30 MHz - 480 MHz |
| Frame rate freerun mode | 166 |
| Frame rate trigger (continuous) | 166 |
| Frame rate trigger (maximum) | 166 |
| Exposure time (minimum - maximum) | 0.018 ms - 999 ms |
| Long exposure (maximum) | 30000 ms |
| Power consumption | 1.7 W - 3.4 W |
| Image memory | 128 MB |
| Special features | IDS line scan mode, Sensor hot pixel correction, Overlap trigger, Multi-AOI |

Ambient conditions

The temperature values given below refer to the outer device temperature of the camera housing.
For PCB versions, refer to the separate hints in the respective documentation.

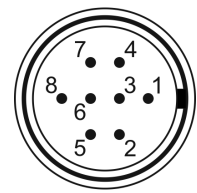
| | |
|-------------------------------------|---------------------------------|
| Device temperature during operation | 0 °C - 55 °C / 32 °F - 131 °F |
| Device temperature during storage | -20 °C - 60 °C / -4 °F - 140 °F |
| Humidity (relative, non-condensing) | 20 % - 80 % |

Connectors

| | |
|---------------------|---|
| Interface connector | USB Type-C |
| I/O connector | 8-pin Hirose connector (HR25-7TR-8PA(73)) |
| Power supply | USB cable |

Pin assignment I/O connector

| | |
|---|---|
| 1 | Ground (GND) |
| 2 | Flash output with optocoupler (-) |
| 3 | General Purpose I/O (GPIO) 1, 3.3 V |
| 4 | Trigger input with optocoupler (-) |
| 5 | Flash output with optocoupler (+) |
| 6 | General Purpose I/O (GPIO) 2, 3.3 V |
| 7 | Trigger input with optocoupler (+) |
| 8 | Voltage output (USB Power Delivery), 5-15 V |



Camera rear view

Design

| | |
|------------------|-----------------------------|
| Lens Mount | C-Mount |
| IP code | - |
| Dimensions H/W/L | 34.0 mm x 44.0 mm x 31.0 mm |
| Mass | 46 g |