

## GigE uEye® CP Rev. 2 Installation



### Manuals

For detailed information on this model and the software please go to "Programs > IDS > uEye > Help" after the installation on your PC or go to "Support > Manuals" on our website [www.ids-imaging.com](http://www.ids-imaging.com).

### Get support

[support@ids-imaging.com](mailto:support@ids-imaging.com)

IDS Imaging Development Systems GmbH  
Dimbacher Strasse 6-8  
74182 Obersulm, Germany



### Important Product Information

#### NOTICE!

The camera can be supplied with voltage both from external source and via Power over Ethernet (PoE). The camera should not be supplied through both voltage sources at once as this can irreparably damage the camera.

Depending on the operating conditions of the camera, the camera housing can warm up strongly. Provide sufficient heat dissipation so that the housing temperature does not exceed 55 °C (131 °F).

### 1. Download the latest driver

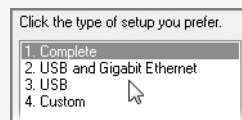
[www.ueyesetup.com](http://www.ueyesetup.com)

Please note that free registration or login is required to download IDS Software Suite.

You can download the latest software for your uEye® camera from [www.ueyesetup.com](http://www.ueyesetup.com). All files are packed in ZIP archives.

For a Windows installation you can choose the full software setup or the smaller "Drivers only" package.

### 2. Install the software



Extract the ZIP archive and start the setup (.exe file). You can now choose to install the complete software or define a customized setup.

Select "1. Complete" to install all drivers with demo applications and manuals.

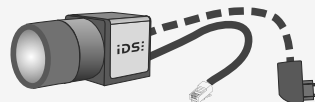
### System requirements

PC with Intel i3 or better  
Free Ethernet port (1000 Mbit/s)

Memory: min. 2 GB  
Disk space: min. 500 MB

Operating system:  
Windows 7 SP1/8/8.1/10 (32/64-bit)  
Linux > Kernel 2.6 (32/64-bit)

### 3. Connect the camera



Connect the camera to an Ethernet cable and power supply (PoE or external - not included). Use the **IDS Camera Manager** to choose a network adaptor for uEye® network service.

LED blinking 1x/2x green: Camera is booting/ready  
LED constant green: Image capture  
LED blinking 2x green and 1x red: No valid IP  
LED constant red: No firmware loaded

### 4. Capture images



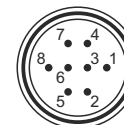
Software to operate your uEye® camera can be found via "Start > All Programs > IDS".

Use the **IDS Camera Manager** to configure all connected uEye® cameras. It is recommended to activate "Automatic ETH configuration" on first start.

With **uEye Cockpit** (Windows)/**uEye Demo** (Linux) you can change camera settings and capture and save images.

### Pin assignment of 8-pin connector (Hirose HR25)

- 1 Ground (GND)
- 2 Flash output with optocoupler (-)
- 3 General purpose I/O (GPIO) 1
- 4 Trigger input with optocoupler (-)
- 5 Flash output with optocoupler (+)
- 6 General purpose I/O (GPIO) 2
- 7 Trigger input with optocoupler (+)
- 8 Input power supply (V<sub>cc</sub>) 12-24 V



Pins – View on camera

### Intended use

IDS industrial cameras are to be used to capture images for visualization and image processing tasks. The devices are designed for use in industrial environments.

### Safety instructions

Read carefully the information in the online manual\* before installing and using the product. The producer is not responsible for damages and injury, which can occur due to false handling of the product and ignoring the safety instructions. All warranty will be spoiled in this case.

- The product is not authorized for use in security relevant applications. If it is used in security relevant applications, the customer is responsible for the necessary approvals.
- If the product is modified or changed CE, FCC, and/or UL approval becomes invalid. In this case the customer is responsible for ensuring product conformity.
- This product is not a toy and should be kept and operated out of reach of children.

The product must be connected, taken into operation and maintained only by appropriately qualified personnel.

- The camera must be installed in such way that the specifications are met which are described in the online manual\*.
- Before starting up, check if the electrical wiring corresponds to the specifications in the online manual\*.
- Only operate the product under ambient conditions described in the online manual\* for each product. Carefully observe the IP protection class for your camera.
- Do not subject this product to direct sunlight, moisture or shock.
- Lay cables in such way that no one can step on or they do not represent a trip hazard.
- Keep packing materials like films away from children. In case of abuse there is a risk of suffocation.

\* <http://en.ids-imaging.com/manuals-ueye.html>