

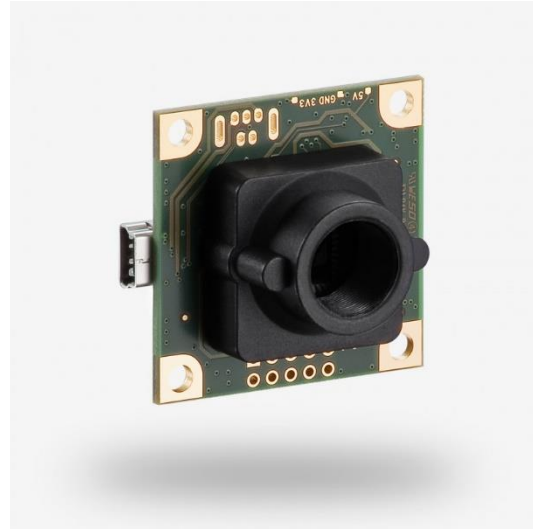
Document availability: **Public**

Title: Electronic component change of USB 2 uEye LE cameras

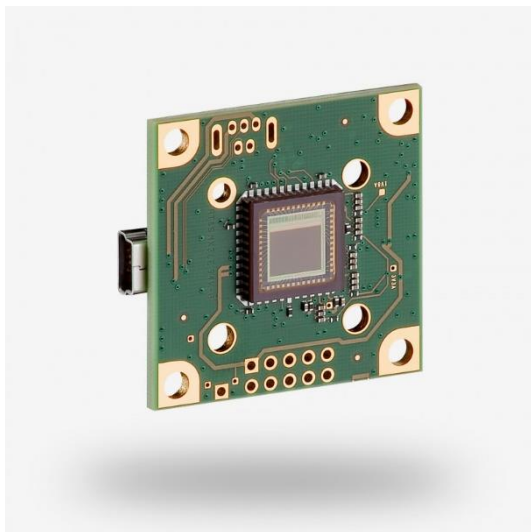
Affected Products:	uEye USB2 cameras <ul style="list-style-type: none">• UI-124xLE• UI-125xLE• UI-149xLE
Type of Product Change:	<input type="checkbox"/> Electrical Specification <input checked="" type="checkbox"/> Mechanical Specification <input type="checkbox"/> Optical Specification <input type="checkbox"/> Firmware Specification <input type="checkbox"/> Regulatory or Compliance <input type="checkbox"/> Change of Part Number <input type="checkbox"/> Discontinued Product or Part
Document Version:	1.0
Release date:	8 th September 2020



UI-1240LE



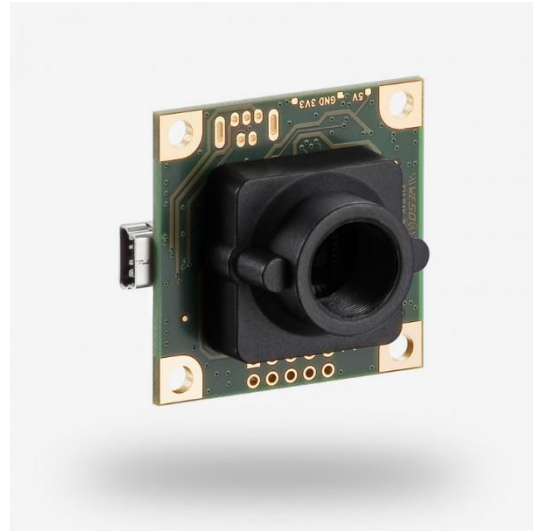
UI-1241LE



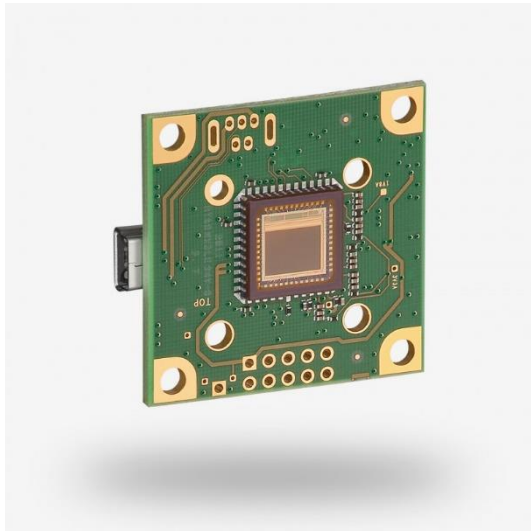
UI-1242LE



UI-1250LE



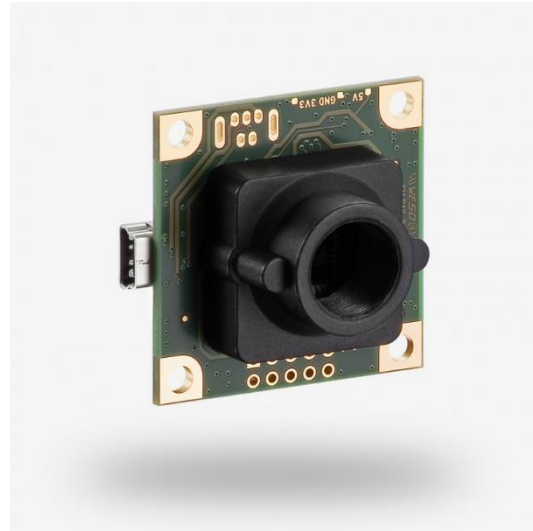
UI-1251LE



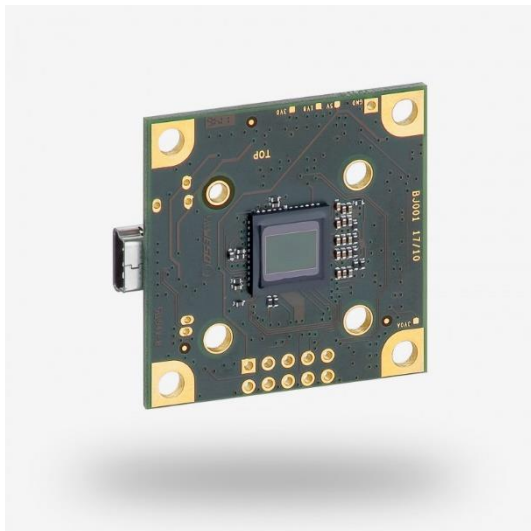
UI-1252LE



UI-149LE



UI-1491LE



UI-1492LE

Reasons and description of the product adaption

An electronic component of the camera is discontinued and replaced by a similar component. The electronic characteristic of the camera does not change.

The board level versions of the camera have a new outline of the electronic components on the PCB. The size of the pcb and mounting holes do not change.

UI-124xLE, UI-125xLE		
	Current version	New version
TOP		
BOTTOM		

UI-149xLE		
	Current version	New version
TOP		
BOTTOM		

Within the scope of the new UI-149xLE PCB version electronic components with a large mechanical height moved from the sensor side of the PCB to the bottom side of the PCB. The mounting situation of the cameras is improved.

Recommended action for customers

No action required for customers using the cameras with plastic housing (UI-xxx0LE).

The assembly situation of the board level cameras requires a review. Make sure there is no mechanical collision of the electronic components of the camera to its surrounding.

Date of change

This product change takes place from 1st January 2021 in our production line.